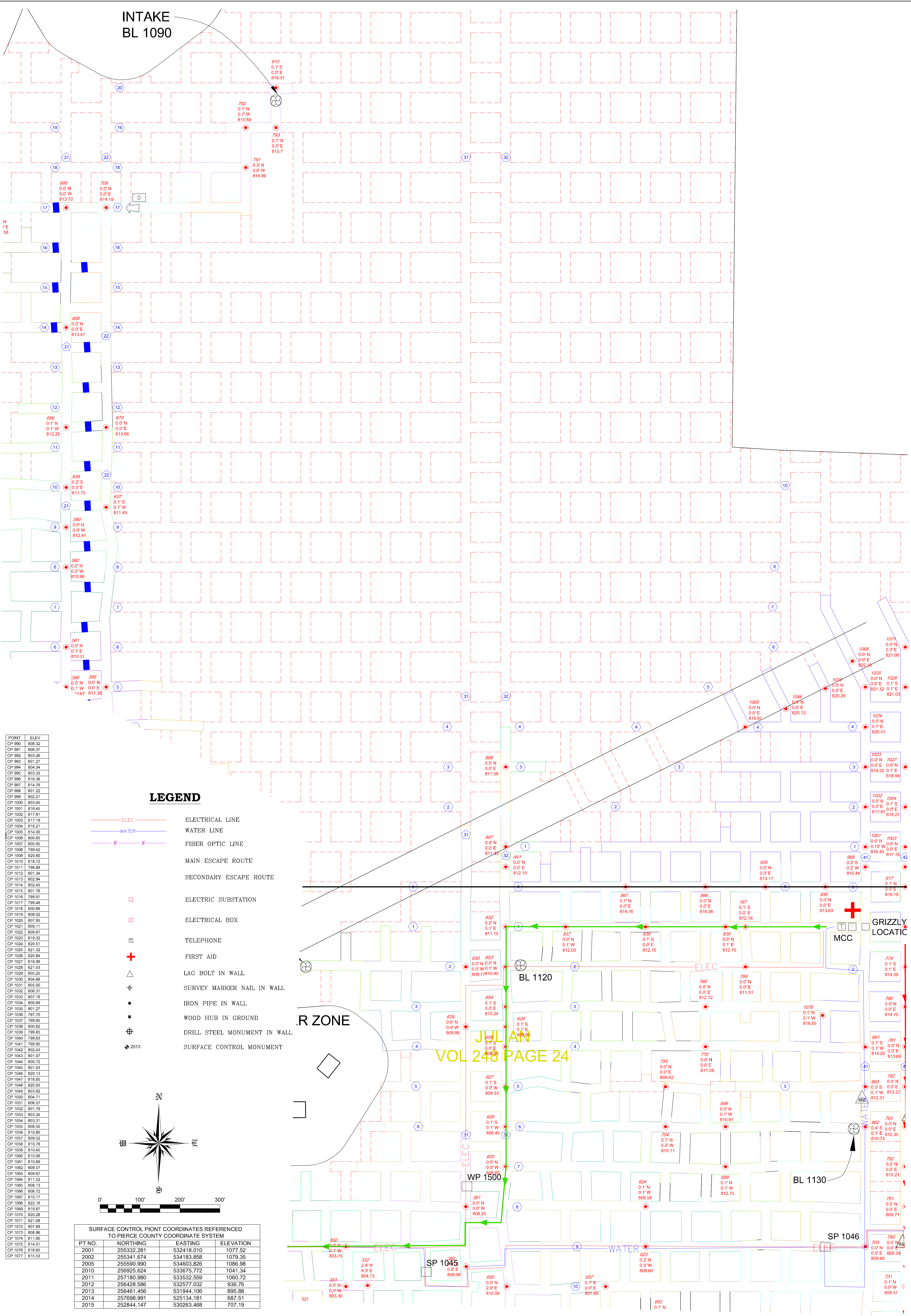


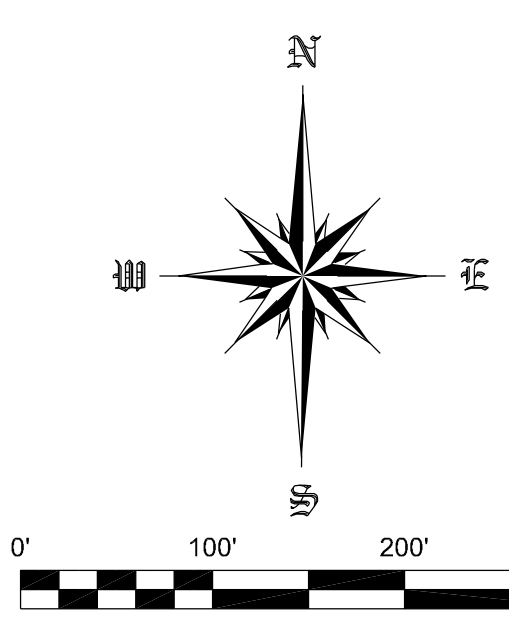
INTAKE
BL 1090



POINT	ELEV
CP 990	808.32
CP 991	808.37
CP 992	803.26
CP 993	801.27
CP 994	804.34
CP 995	803.33
CP 996	816.36
CP 997	814.76
CP 998	801.22
CP 999	802.21
CP 1000	803.40
CP 1001	816.45
CP 1002	817.91
CP 1003	817.19
CP 1004	818.21
CP 1005	814.00
CP 1006	800.65
CP 1007	800.95
CP 1008	799.42
CP 1009	820.60
CP 1010	818.72
CP 1011	798.88
CP 1012	801.34
CP 1013	802.34
CP 1014	802.45
CP 1015	801.76
CP 1016	799.91
CP 1017	799.48
CP 1018	800.66
CP 1019	808.02
CP 1020	807.95
CP 1021	809.11
CP 1022	809.67
CP 1023	819.32
CP 1024	820.51
CP 1025	821.32
CP 1026	820.34
CP 1027	818.99
CP 1028	821.03
CP 1029	805.25
CP 1030	804.68
CP 1031	805.00
CP 1032	806.31
CP 1033	807.16
CP 1034	800.89
CP 1035	801.27
CP 1036	797.70
CP 1037	799.95
CP 1038	800.82
CP 1039	799.85
CP 1040	799.83
CP 1041	799.95
CP 1042	802.43
CP 1043	801.07
CP 1044	800.72
CP 1045	801.03
CP 1046	820.13
CP 1047	818.85
CP 1048	820.93
CP 1049	803.92
CP 1050	804.71
CP 1051	806.57
CP 1052	801.79
CP 1053	803.34
CP 1054	803.31
CP 1055	806.50
CP 1056	810.80
CP 1057	809.52
CP 1058	810.78
CP 1059	810.45
CP 1060	810.06
CP 1061	810.69
CP 1062	809.57
CP 1063	809.67
CP 1064	811.62
CP 1065	808.13
CP 1066	808.72
CP 1067	810.17
CP 1068	822.16
CP 1069	819.67
CP 1070	820.28
CP 1071	821.08
CP 1072	807.89
CP 1073	808.96
CP 1074	811.80
CP 1075	814.01
CP 1076	816.65
CP 1077	815.53

LEGEND

- ELEC ELECTRICAL LINE
- WATER WATER LINE
- F FIBER OPTIC LINE
- MAIN ESCAPE ROUTE
- SECONDARY ESCAPE ROUTE
- ELECTRIC SUBSTATION
- ELECTRICAL BOX
- TELEPHONE
- + FIRST AID
- △ LAG BOLT IN WALL
- ⊕ SURVEY MARKER NAIL IN WALL
- IRON PIPE IN WALL
- ✕ WOOD HUB IN GROUND
- ⊕ DRILL STEEL MONUMENT IN WALL
- ⊕ SURFACE CONTROL MONUMENT



SURFACE CONTROL POINT COORDINATES REFERENCED TO PIERCE COUNTY COORDINATE SYSTEM

PT NO.	NORTHING	EASTING	ELEVATION
2001	255332.281	532418.010	1077.52
2002	255341.674	534183.858	1079.35
2005	255590.990	534603.826	1086.98
2010	256925.624	533675.772	1041.34
2011	257180.980	533532.659	1060.72
2012	256426.586	532577.032	936.76
2013	256461.456	531944.106	895.88
2014	257698.991	525134.181	687.51
2015	252844.147	530263.468	707.19

SHEET NO.
F-3

PROJECT NO.	CAD FILE	SURVEYED BY	DRAWN BY	APPROVED BY	NO.	DATE	REVISIONS	BY
18-0609	18-0609.dwg	TMH	TMH					
DATE	CRD FILE	SURVEY DATE	CHECKED BY	SCALE				
11/6/2018	18-0609.crd	11/6/2018	TMH	1"=100'				

WISCONSIN INDUSTRIAL SAND COMPANY, LLC
A DIVISION OF COVIA HOLDINGS CORP.
MAIDEN ROCK, WISCONSIN
CONTROL POINT LOCATION MAP

HEALY
LAND SURVEYING

Healy Land Surveying
P.O. Box 221
Niagara, WI 54151
Phone: 715-548-0566
info@healysurveying.com