

|                        |                         |                          |                   |                  |     |           |                |     |
|------------------------|-------------------------|--------------------------|-------------------|------------------|-----|-----------|----------------|-----|
| PROJECT NO.<br>18-0609 | CAD FILE<br>18-0609.dwg | SURVEYED BY<br>TMH       | DRAWN BY<br>TMH   | APPROVED BY      | NO. | DATE      | REVISIONS      | BY  |
|                        |                         |                          |                   |                  | 1   | 11/9/2018 | CONTROL POINTS | TMH |
| DATE<br>10/24/2018     | CRD FILE<br>18-0609.crd | SURVEY DATE<br>10/3/2018 | CHECKED BY<br>TMH | SCALE<br>1"=800' |     |           |                |     |

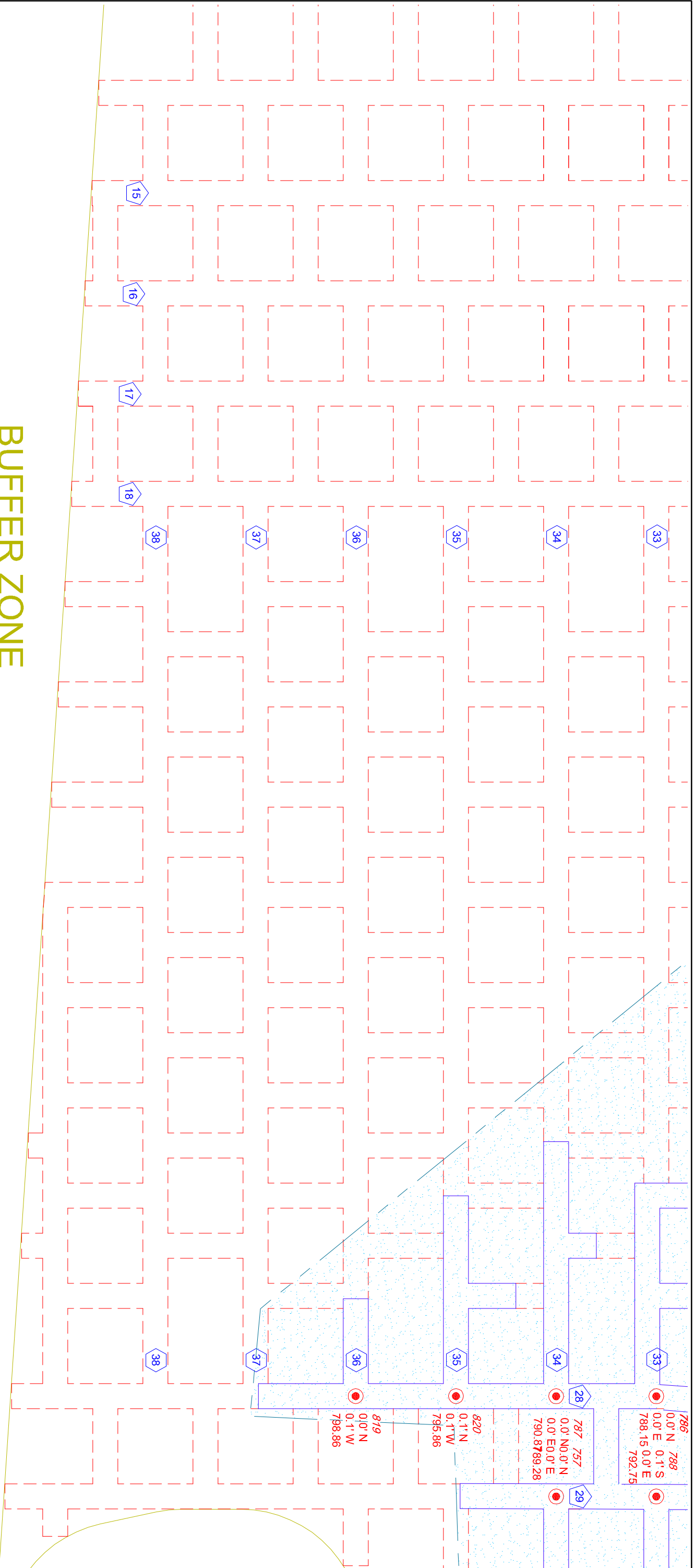
WISCONSIN INDUSTRIAL SAND COMPANY, LLC  
 A DIVISION OF COVIA HOLDINGS CORP.  
 MAIDEN ROCK, WISCONSIN  
 CONTROL POINT DETAIL MAP



Healy Land Surveying  
 P.O. Box 221  
 Niagara, WI 54151  
 Phone: 715-548-0566  
 info@healysurveying.com

SHEET NO.  
**J-1A**

# BUFFER ZONE



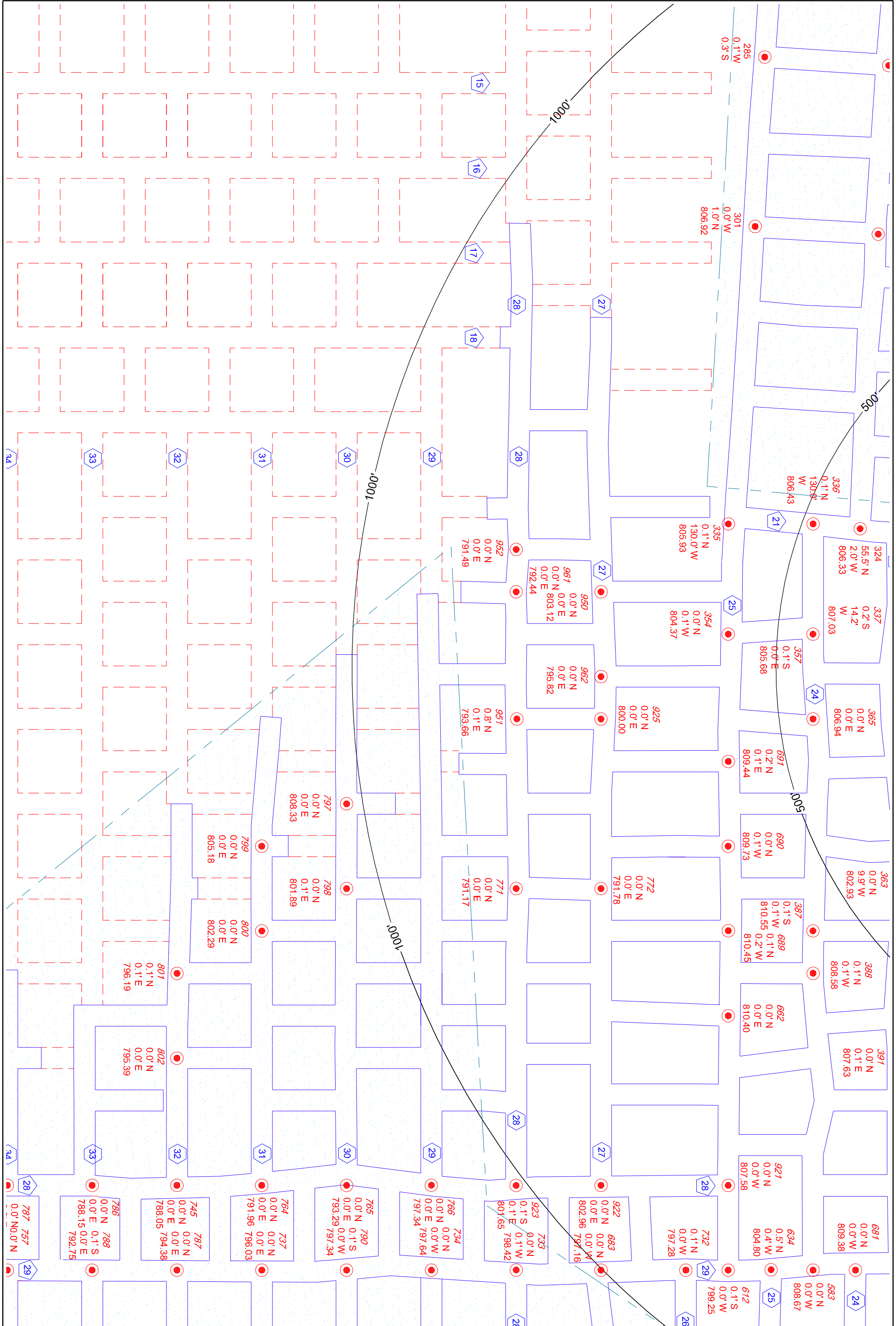
SHEET NO. J-5G

|                        |                         |                          |                   |                  |     |           |                |     |
|------------------------|-------------------------|--------------------------|-------------------|------------------|-----|-----------|----------------|-----|
| PROJECT NO.<br>18-0609 | CAD FILE<br>18-0609.dwg | SURVEYED BY<br>TMH       | DRAWN BY<br>TMH   | APPROVED BY      | NO. | DATE      | REVISIONS      | BY  |
| DATE<br>10/24/2018     | CRD FILE<br>18-0609.crd | SURVEY DATE<br>10/3/2018 | CHECKED BY<br>TMH | SCALE<br>1"=100' | 1   | 11/9/2018 | CONTROL POINTS | TMH |

**WISCONSIN INDUSTRIAL SAND COMPANY, LLC**  
 A DIVISION OF COVIA HOLDINGS CORP.  
 MAIDEN ROCK, WISCONSIN  
 CONTROL POINT DETAIL MAP

Healy Land Surveying  
 P.O. Box 221  
 Niagara, WI 54151  
 Phone: 715-548-0566  
 info@healysurveying.com

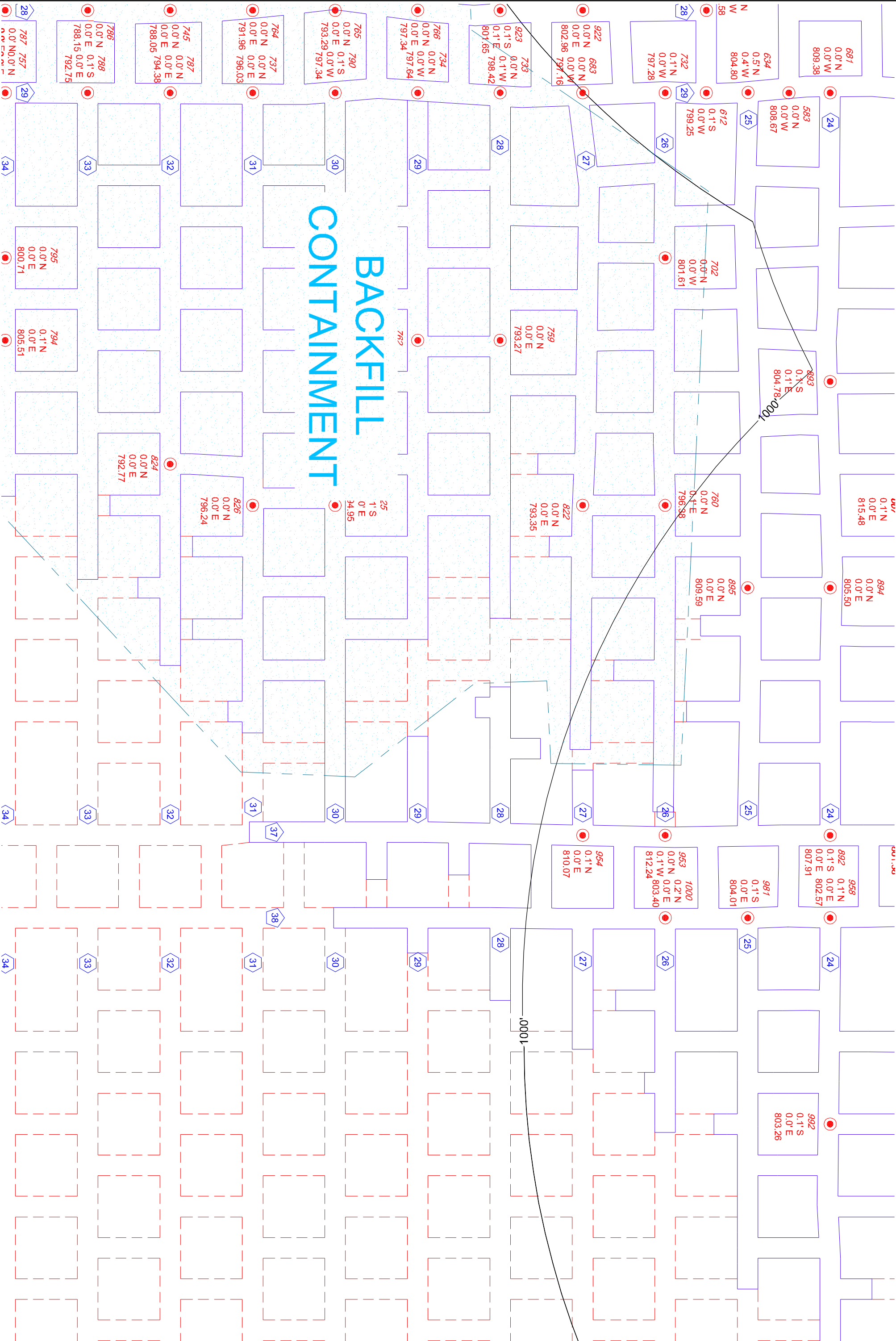




|                        |                         |                          |                   |                  |     |           |                |     |
|------------------------|-------------------------|--------------------------|-------------------|------------------|-----|-----------|----------------|-----|
| PROJECT NO.<br>18-0609 | CAD FILE<br>18-0609.dwg | SURVEYED BY<br>TMH       | DRAWN BY<br>TMH   | APPROVED BY      | NO. | DATE      | REVISIONS      | BY  |
|                        |                         |                          |                   |                  | 1   | 11/9/2018 | CONTROL POINTS | TMH |
| DATE<br>10/24/2018     | CRD FILE<br>18-0609.crd | SURVEY DATE<br>10/3/2018 | CHECKED BY<br>TMH | SCALE<br>1"=100' |     |           |                |     |

**WISCONSIN INDUSTRIAL SAND COMPANY, LLC**  
 A DIVISION OF COVIA HOLDINGS CORP.  
 MAIDEN ROCK, WISCONSIN  
 CONTROL POINT DETAIL MAP

Healy Land Surveying  
 P.O. Box 221  
 Niagara, WI 54151  
 Phone: 715-548-0566  
 info@healysurveying.com



# BACKFILL CONTAINMENT

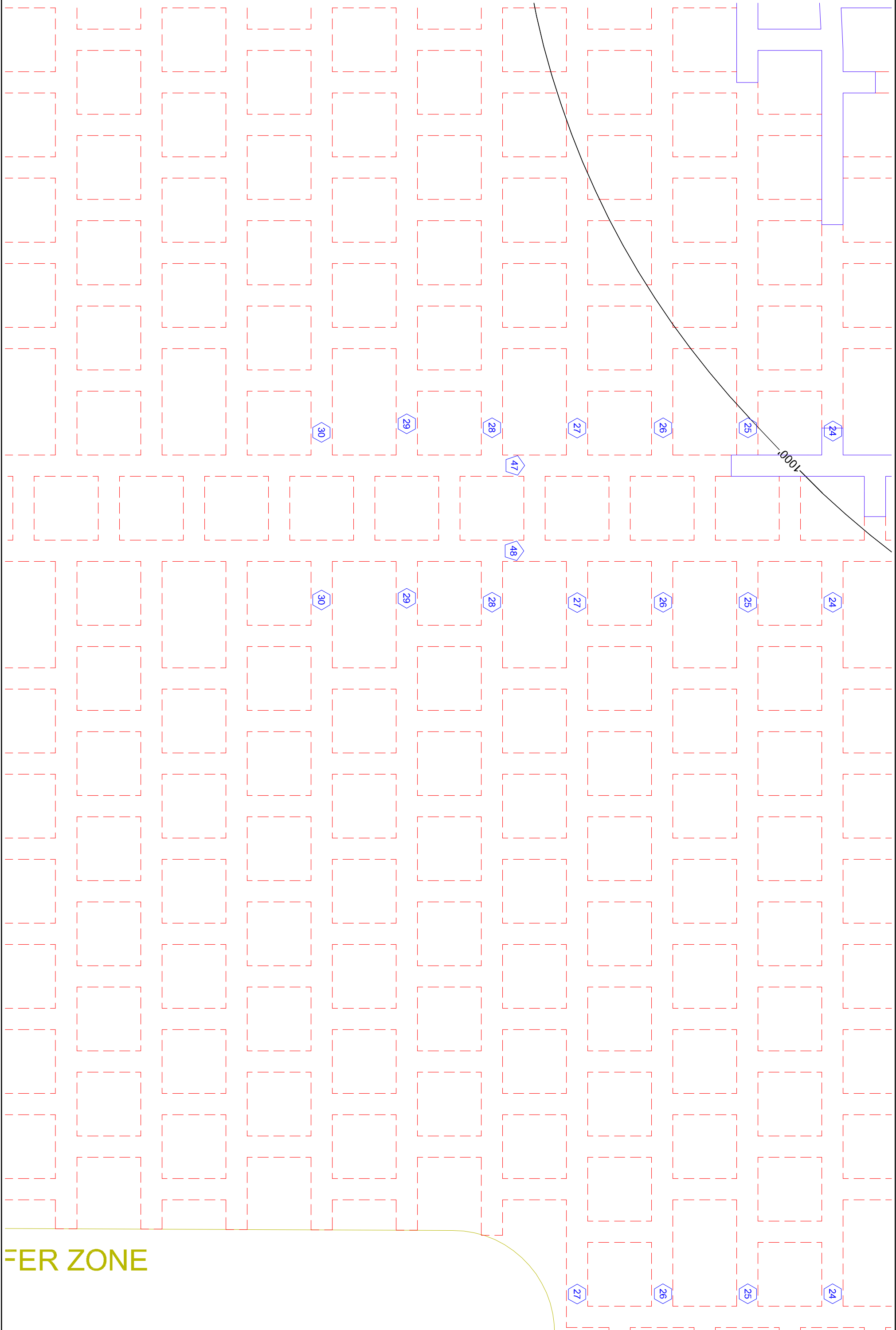
1"=100'

|                        |                         |                          |                   |                  |     |           |                |     |
|------------------------|-------------------------|--------------------------|-------------------|------------------|-----|-----------|----------------|-----|
| PROJECT NO.<br>18-0609 | CAD FILE<br>18-0609.dwg | SURVEYED BY<br>TMH       | DRAWN BY<br>TMH   | APPROVED BY      | NO. | DATE      | REVISIONS      | BY  |
|                        |                         |                          |                   |                  | 1   | 11/9/2018 | CONTROL POINTS | TMH |
| DATE<br>10/24/2018     | CRD FILE<br>18-0609.crd | SURVEY DATE<br>10/3/2018 | CHECKED BY<br>TMH | SCALE<br>1"=100' |     |           |                |     |

WISCONSIN INDUSTRIAL SAND COMPANY, LLC  
A DIVISION OF COVIA HOLDINGS CORP.  
MAIDEN ROCK, WISCONSIN  
CONTROL POINT DETAIL MAP

Healy Land Surveying  
P.O. Box 221  
Niagara, WI 54151  
Phone: 715-548-0566  
info@healysurveying.com

J-6H  
SHEET NO.



FER ZONE

|                        |                         |                          |                   |                  |     |            |             |     |
|------------------------|-------------------------|--------------------------|-------------------|------------------|-----|------------|-------------|-----|
| PROJECT NO.<br>18-0608 | CAD FILE<br>18-0608.dwg | SURVEYED BY<br>TMH       | DRAWN BY<br>TMH   | APPROVED BY      | NO. | DATE       | REVISIONS   | BY  |
|                        |                         |                          |                   |                  | 1   | 10/26/2018 | CONNECTIONS | TMH |
| DATE<br>10/14/2018     | CRD FILE<br>18-0608.crd | SURVEY DATE<br>10/3/2018 | CHECKED BY<br>TMH | SCALE<br>1"=100' |     |            |             |     |

WISCONSIN INDUSTRIAL SAND COMPANY, LLC  
 A DIVISION OF COVIA HOLDINGS CORP.  
 MAIDEN ROCK, WISCONSIN  
 CONTROL POINT DETAIL MAP



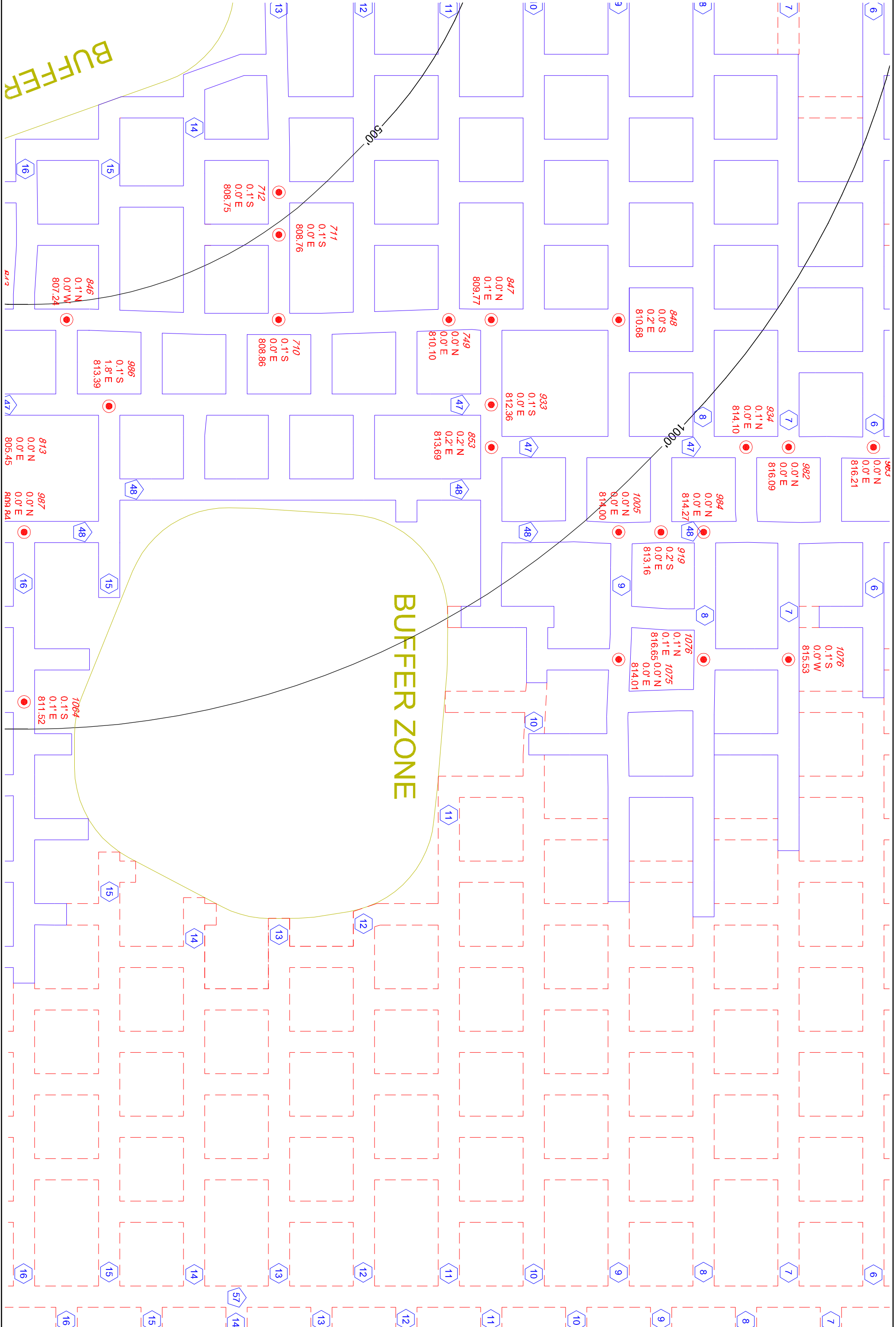
Healy Land Surveying  
 P.O. Box 221  
 Niagara, WI 54151  
 Phone: 715-548-0566  
 info@healysurveying.com

SHEET NO.  
J-61



**BUFFER**

**BUFFER ZONE**



|             |          |             |            |             |     |      |           |    |
|-------------|----------|-------------|------------|-------------|-----|------|-----------|----|
| PROJECT NO. | CAD FILE | SURVEYED BY | DRAWN BY   | APPROVED BY | NO. | DATE | REVISIONS | BY |
|             |          | TMH         | TMH        |             |     |      |           |    |
| DATE        | CRD FILE | SURVEY DATE | CHECKED BY | SCALE       |     |      |           |    |
|             |          |             | TMH        | 1"=100'     |     |      |           |    |

WISCONSIN INDUSTRIAL SAND COMPANY, LLC  
 A DIVISION OF COVIA HOLDINGS CORP.  
 MAIDEN ROCK, WISCONSIN  
 CONTROL POINT DETAIL MAP

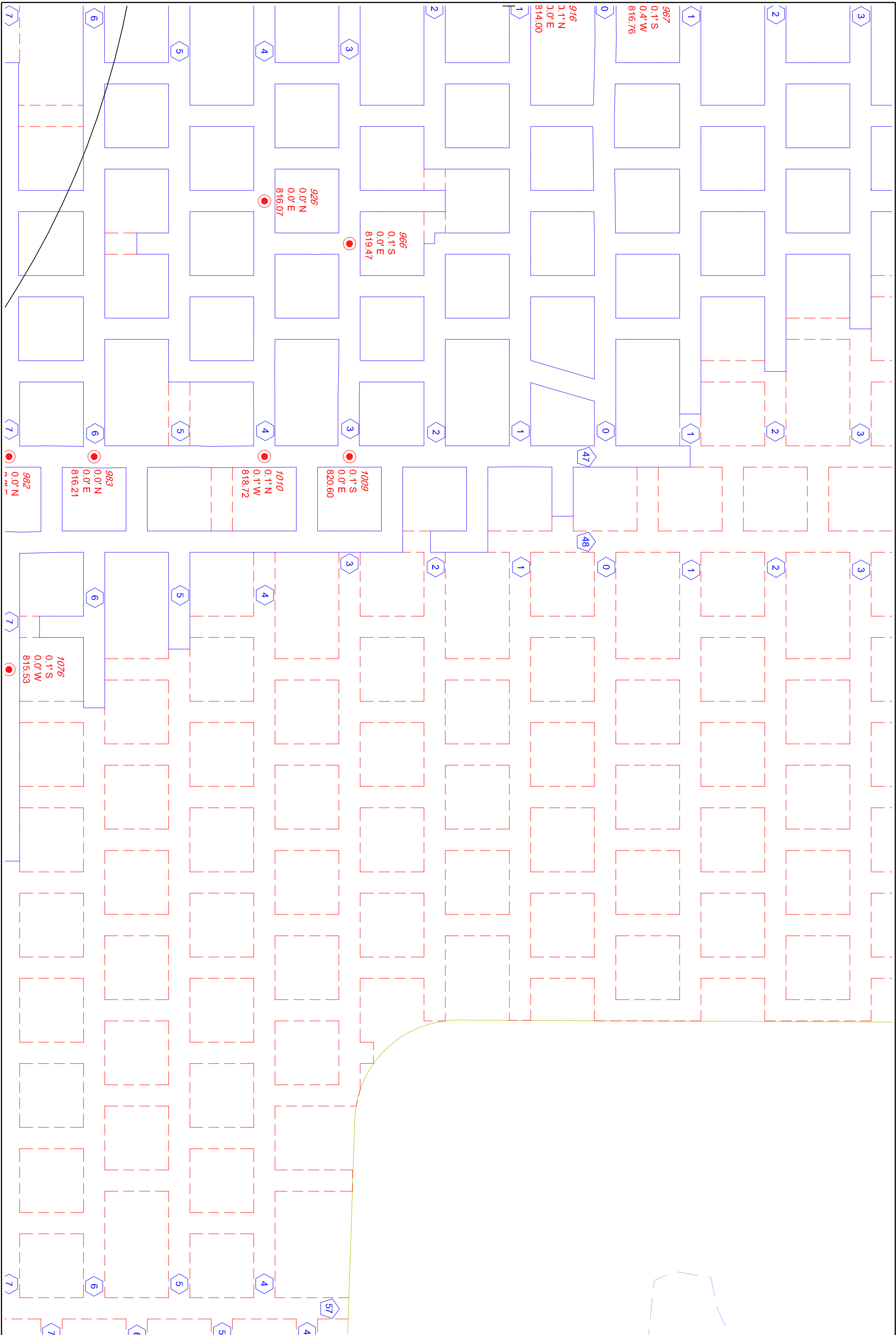


Healy Land Surveying  
 P.O. Box 221  
 Niagara, WI 54151  
 Phone: 715-548-0566  
 info@healysurveying.com

J-81  
 SHEET NO.





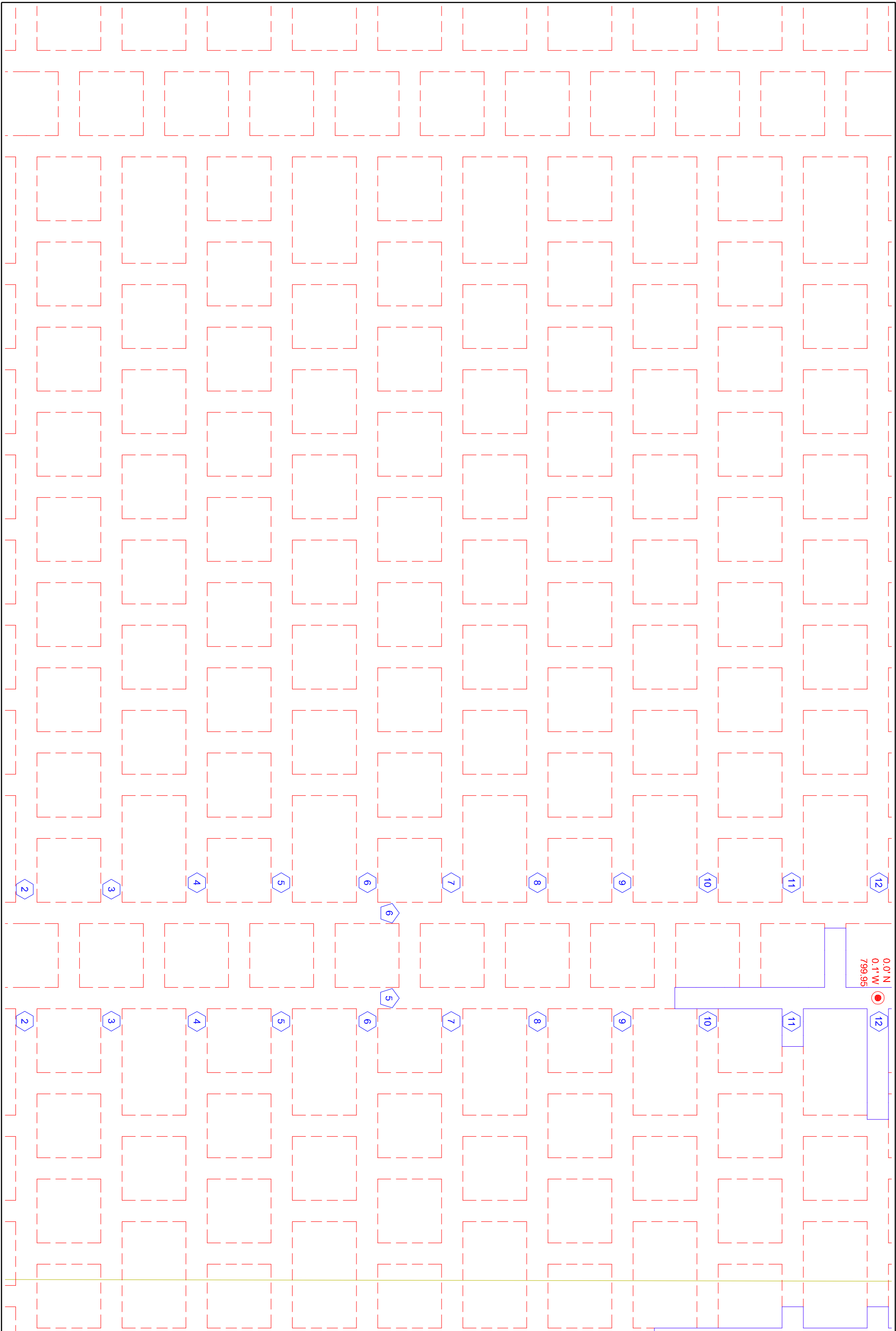


|                     |          |                    |                   |                  |     |            |                 |     |
|---------------------|----------|--------------------|-------------------|------------------|-----|------------|-----------------|-----|
| PROJECT NO.<br>J-91 | CAD FILE | SURVEYED BY<br>TMH | DRAWN BY<br>TMH   | APPROVED BY      | NO. | DATE       | REVISIONS       | BY  |
|                     |          | SURVEY DATE        | CHECKED BY<br>TMH | SCALE<br>1"=100' |     |            |                 |     |
| DATE                | CRD FILE |                    |                   |                  | 1   | 10/26/2018 | CONNOR L. ROBUS | TMH |

WISCONSIN INDUSTRIAL SAND COMPANY, LLC  
 A DIVISION OF COVIA HOLDINGS CORP.  
 MAIDEN ROCK, WISCONSIN  
 CONTROL POINT DETAIL MAP



Healy Land Surveying  
 P.O. Box 221  
 Niagara, WI 54151  
 Phone: 715-548-0566  
 info@healysurveying.com



0.0' N  
0.1' W  
799.95

J-10D  
SHEET NO.

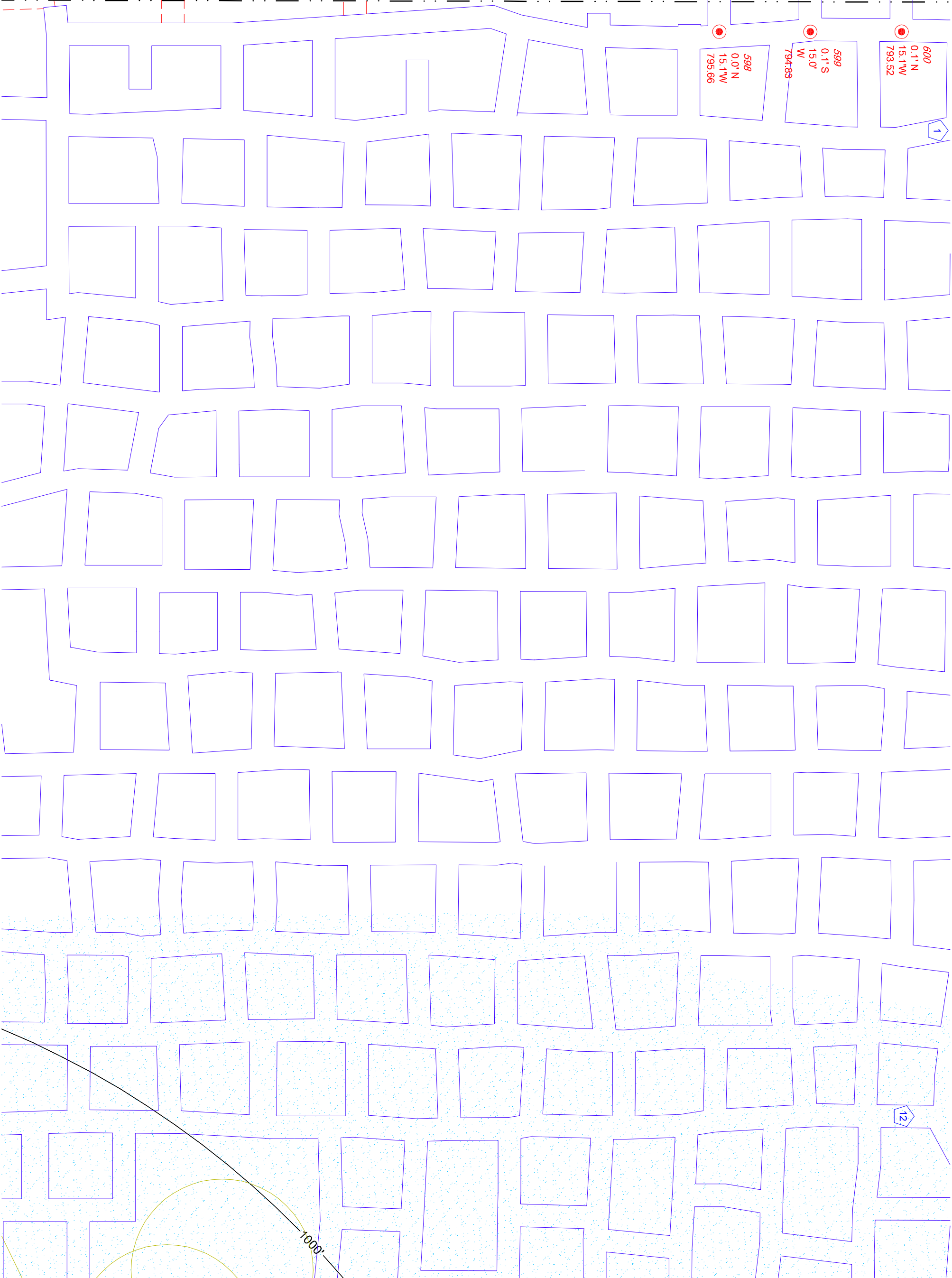
| PROJECT NO. | CAD FILE    | SURVEYED BY | DRAWN BY   | APPROVED BY | NO. | DATE      | REVISIONS      | BY  |
|-------------|-------------|-------------|------------|-------------|-----|-----------|----------------|-----|
| 18-0609     | 18-0609.dwg | TMH         | TMH        |             |     |           |                |     |
| DATE        | CRD FILE    | SURVEY DATE | CHECKED BY | SCALE       |     |           |                |     |
| 10/24/2018  | 18-0609.crd | 10/3/2018   | TMH        | 1"=100'     | 1   | 11/9/2018 | CONTROL POINTS | TMH |

WISCONSIN INDUSTRIAL SAND COMPANY, LLC  
A DIVISION OF COVIA HOLDINGS CORP.  
MAIDEN ROCK, WISCONSIN  
CONTROL POINT DETAIL MAP



Healy Land Surveying  
P.O. Box 221  
Niagara, WI 54151  
Phone: 715-548-0566  
info@healysurveying.com

# VILLAGE LIMITS BUFFER



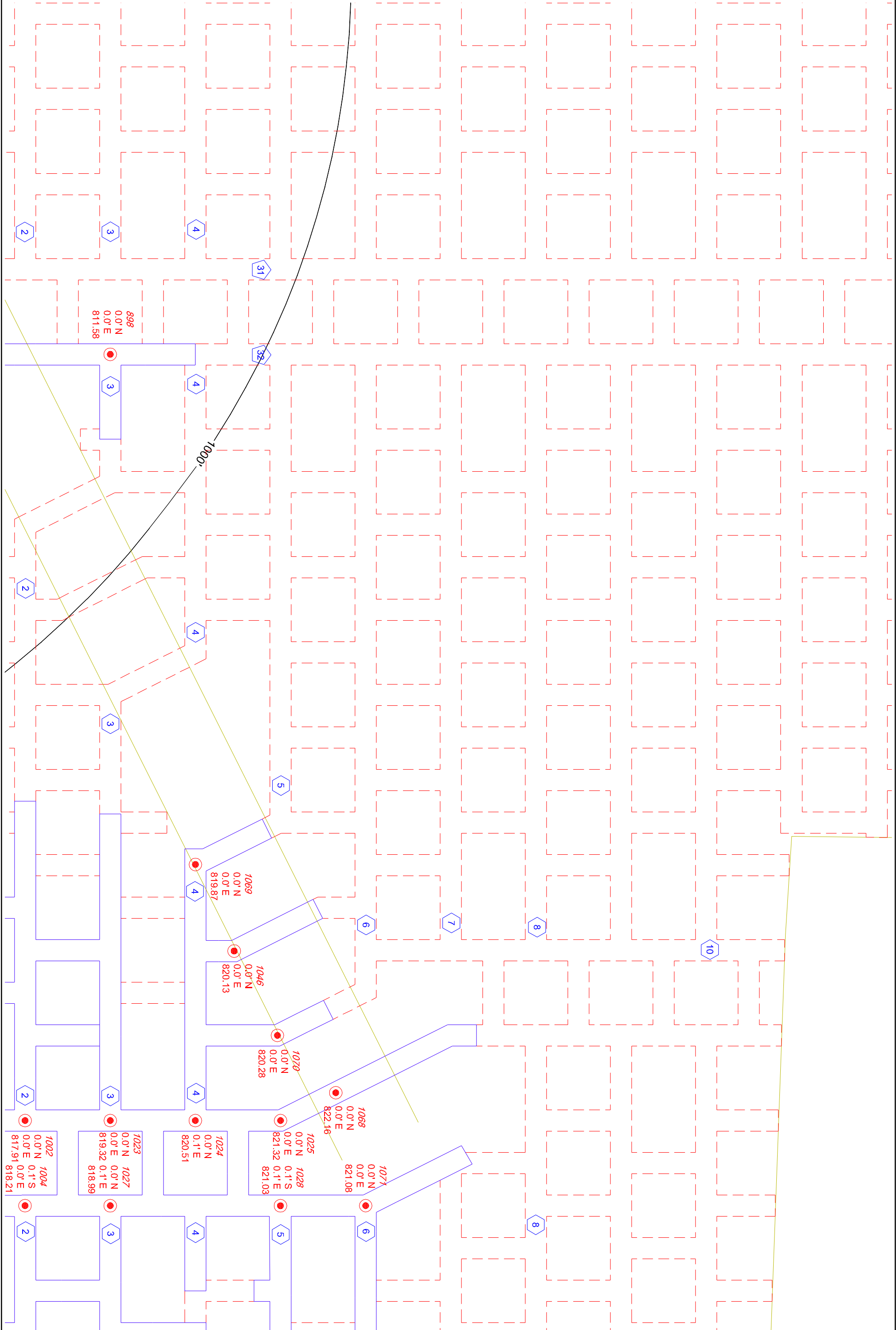
J-10E  
SHEET NO.

| PROJECT NO. | CAD FILE    | SURVEYED BY | DRAWN BY   | APPROVED BY | NO. | DATE      | REVISIONS      | BY  |
|-------------|-------------|-------------|------------|-------------|-----|-----------|----------------|-----|
| 18-0609     | 18-0609.dwg | TMH         | TMH        |             |     |           |                |     |
| DATE        | CRD FILE    | SURVEY DATE | CHECKED BY | SCALE       |     |           |                |     |
| 10/24/2018  | 18-0609.crd | 10/3/2018   | TMH        | 1"=100'     | 1   | 11/9/2018 | CONTROL POINTS | TMH |

WISCONSIN INDUSTRIAL SAND COMPANY, LLC  
 A DIVISION OF COVIA HOLDINGS CORP.  
 MAIDEN ROCK, WISCONSIN  
 CONTROL POINT DETAIL MAP



Healy Land Surveying  
 P.O. Box 221  
 Niagara, WI 54151  
 Phone: 715-548-0566  
 info@healysurveying.com



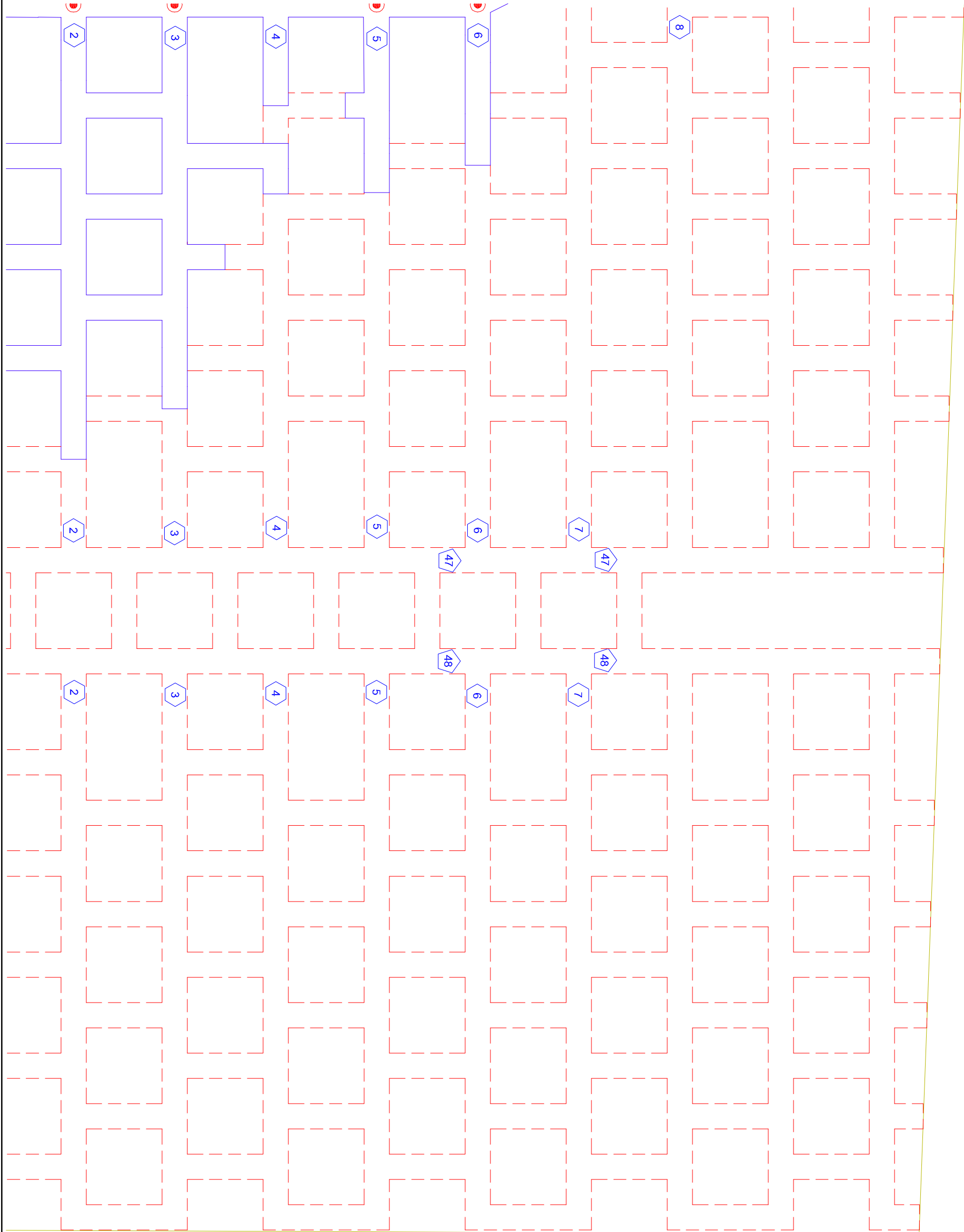
J-10H  
SHEET NO.

|                        |                         |                          |                   |                  |     |           |                      |     |
|------------------------|-------------------------|--------------------------|-------------------|------------------|-----|-----------|----------------------|-----|
| PROJECT NO.<br>18-0609 | CAD FILE<br>18-0609.dwg | SURVEYED BY<br>TMH       | DRAWN BY<br>TMH   | APPROVED BY      | NO. | DATE      | REVISIONS            | BY  |
| DATE<br>10/24/2018     | CRD FILE<br>18-0609.crd | SURVEY DATE<br>10/3/2018 | CHECKED BY<br>TMH | SCALE<br>1"=100' | 1   | 9/19/2018 | TO CORRECT ALIGNMENT | TMH |

WISCONSIN INDUSTRIAL SAND COMPANY, LLC  
A DIVISION OF COVIA HOLDINGS CORP.  
MAIDEN ROCK, WISCONSIN  
CONTROL POINT DETAIL MAP



Healy Land Surveying  
P.O. Box 221  
Niagara, WI 54151  
Phone: 715-548-0566  
info@healysurveying.com



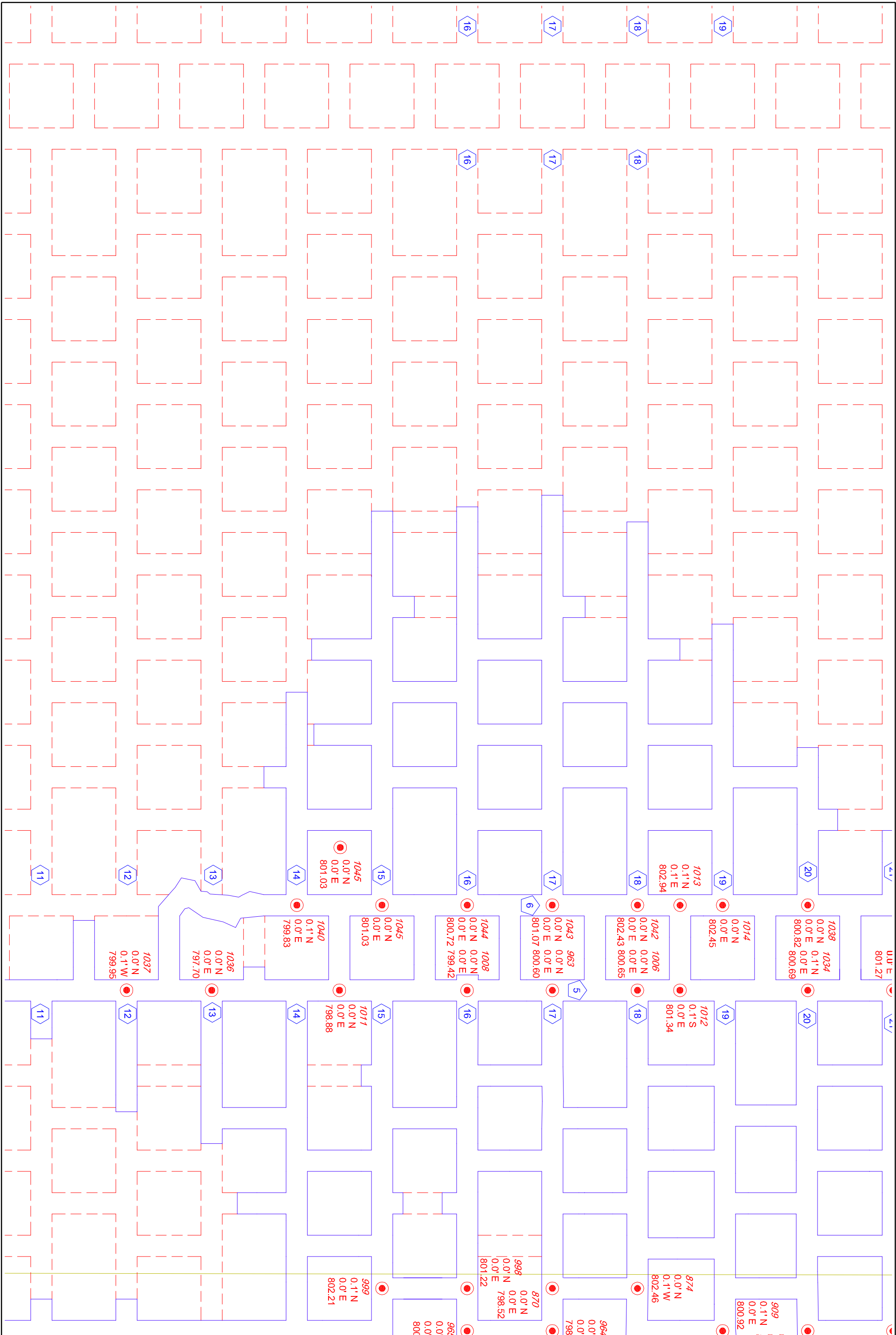
|             |          |             |            |             |     |            |                 |     |
|-------------|----------|-------------|------------|-------------|-----|------------|-----------------|-----|
| PROJECT NO. | CAD FILE | SURVEYED BY | DRAWN BY   | APPROVED BY | NO. | DATE       | REVISIONS       | BY  |
|             |          | TMH         | TMH        |             |     |            |                 |     |
| DATE        | CRD FILE | SURVEY DATE | CHECKED BY | SCALE       |     |            |                 |     |
|             |          |             | TMH        | 1"=100'     |     |            |                 |     |
|             |          |             |            |             | 1   | 10/26/2018 | CONNOR L. RODUS | TMH |

WISCONSIN INDUSTRIAL SAND COMPANY, LLC  
 A DIVISION OF COVIA HOLDINGS CORP.  
 MAIDEN ROCK, WISCONSIN  
 CONTROL POINT DETAIL MAP




Healy Land Surveying  
 P.O. Box 221  
 Niagara, WI 54151  
 Phone: 715-548-0566  
 info@healysurveying.com

SHEET NO.  
**J-101**



|                        |                         |                          |                   |                  |                |           |           |  |     |
|------------------------|-------------------------|--------------------------|-------------------|------------------|----------------|-----------|-----------|--|-----|
| PROJECT NO.<br>18-0609 | CAD FILE<br>18-0609.dwg | SURVEYED BY<br>TMH       | DRAWN BY<br>TMH   | APPROVED BY      | NO.            | DATE      | REVISIONS |  | BY  |
|                        |                         |                          |                   |                  |                |           |           |  |     |
| DATE<br>10/24/2018     | CRD FILE<br>18-0609.crd | SURVEY DATE<br>10/3/2018 | CHECKED BY<br>TMH | SCALE<br>1"=100' | CONTROL POINTS |           |           |  |     |
|                        |                         |                          |                   |                  | 1              | 11/9/2018 |           |  | TMH |

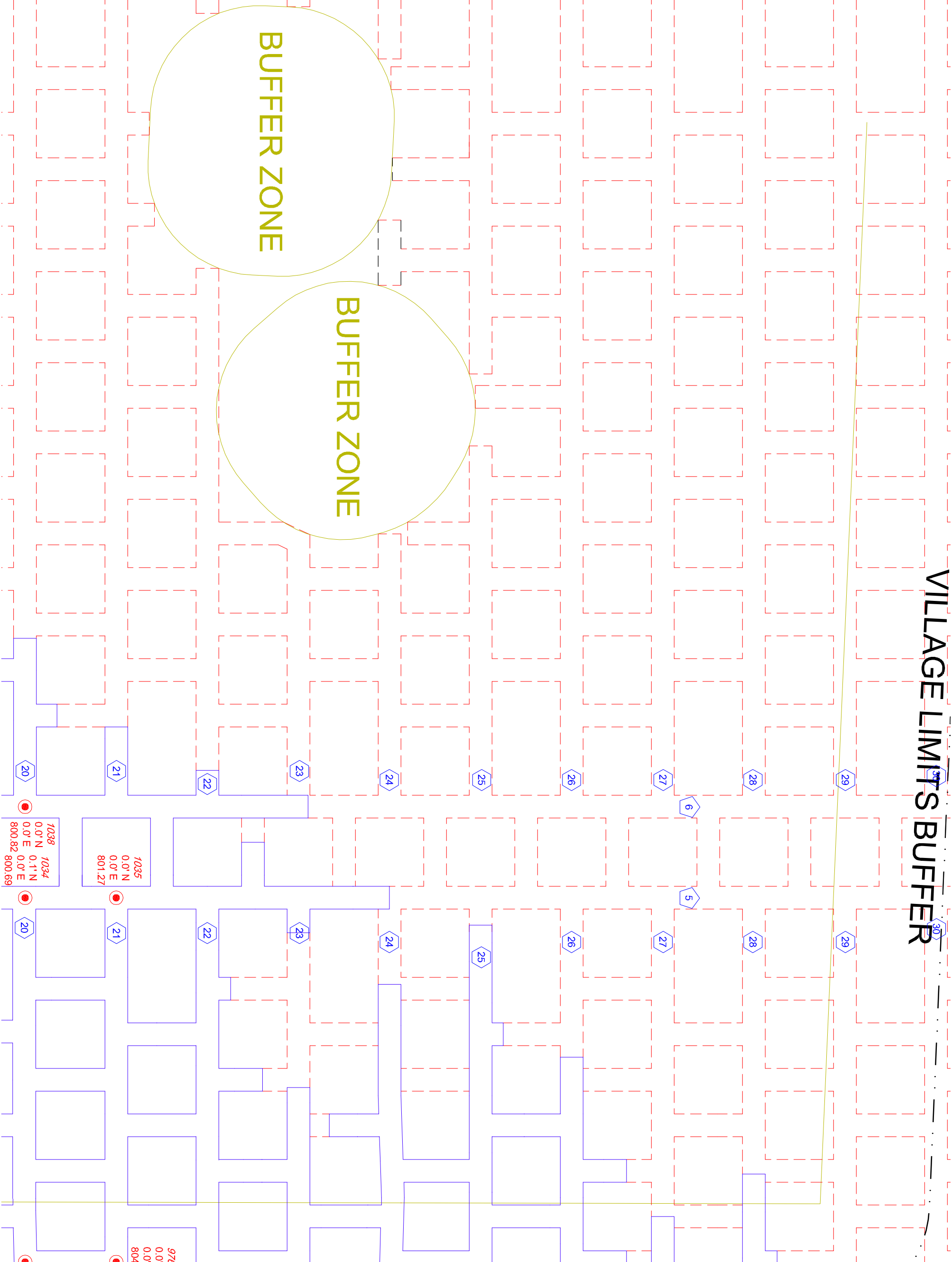
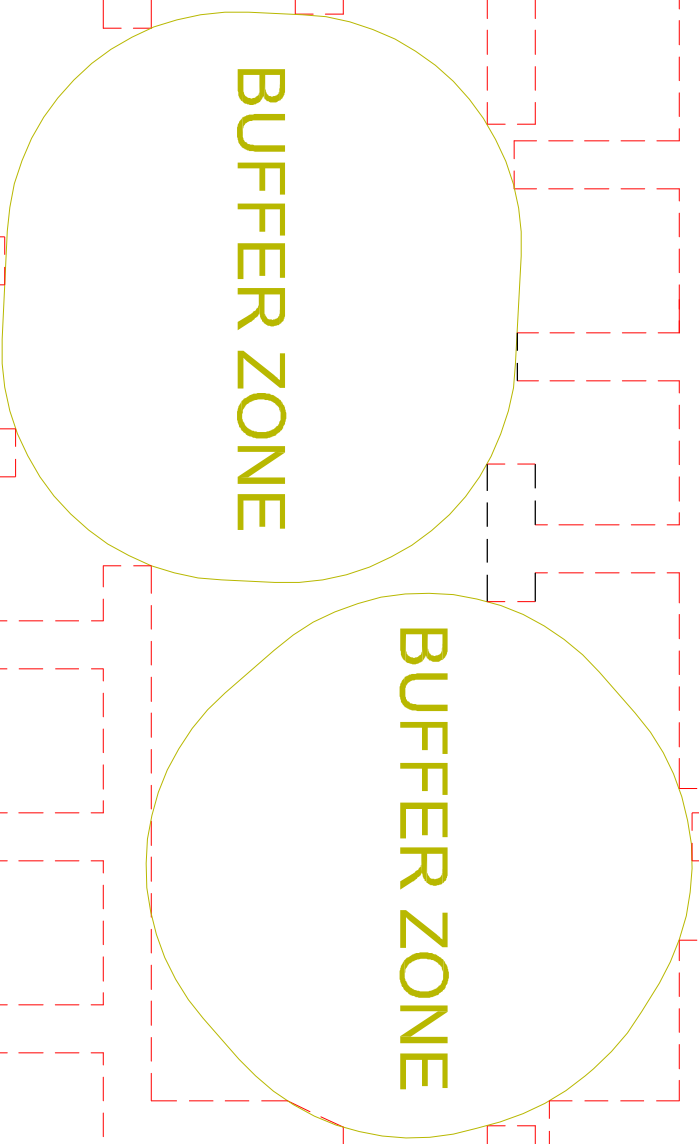
WISCONSIN INDUSTRIAL SAND COMPANY, LLC  
 A DIVISION OF COVIA HOLDINGS CORP.  
 MAIDEN ROCK, WISCONSIN  
 CONTROL POINT DETAIL MAP



Healy Land Surveying  
 P.O. Box 221  
 Niagara, WI 54151  
 Phone: 715-548-0566  
 info@healysurveying.com

J-11D  
 SHEET NO.

# VILLAGE LIMITS BUFFER



1038 1034  
0.0' N 0.1' N  
0.0' E 0.0' E  
800.82 800.69

1035  
0.0' N  
0.0' E  
801.27

976  
0.0'  
0.0'  
804

J-12D  
SHEET NO.

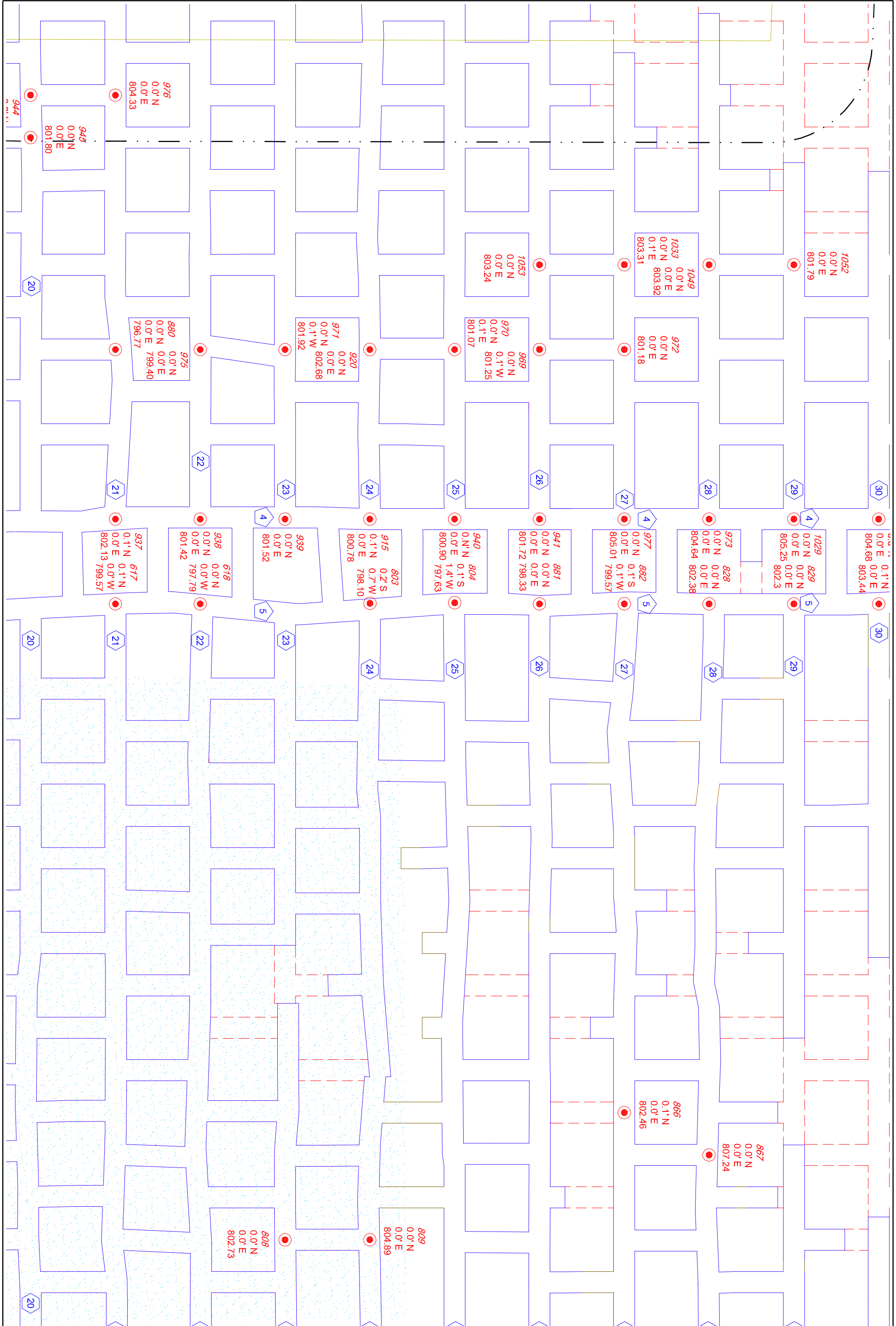
| PROJECT NO. | CAD FILE    | SURVEYED BY | DRAWN BY   | APPROVED BY | NO. | DATE      | REVISIONS      | BY  |
|-------------|-------------|-------------|------------|-------------|-----|-----------|----------------|-----|
| 18-0609     | 18-0609.dwg | TMH         | TMH        |             |     |           |                |     |
| DATE        | CRD FILE    | SURVEY DATE | CHECKED BY | SCALE       |     |           |                |     |
| 10/24/2018  | 18-0609.crd | 10/3/2018   | TMH        | 1"=100'     |     |           |                |     |
|             |             |             |            |             | 1   | 11/9/2018 | CONTROL POINTS | TMH |

WISCONSIN INDUSTRIAL SAND COMPANY, LLC  
A DIVISION OF COVIA HOLDINGS CORP.  
MAIDEN ROCK, WISCONSIN  
CONTROL POINT DETAIL MAP



Healy Land Surveying  
P.O. Box 221  
Niagara, WI 54151  
Phone: 715-548-0566  
info@healysurveying.com





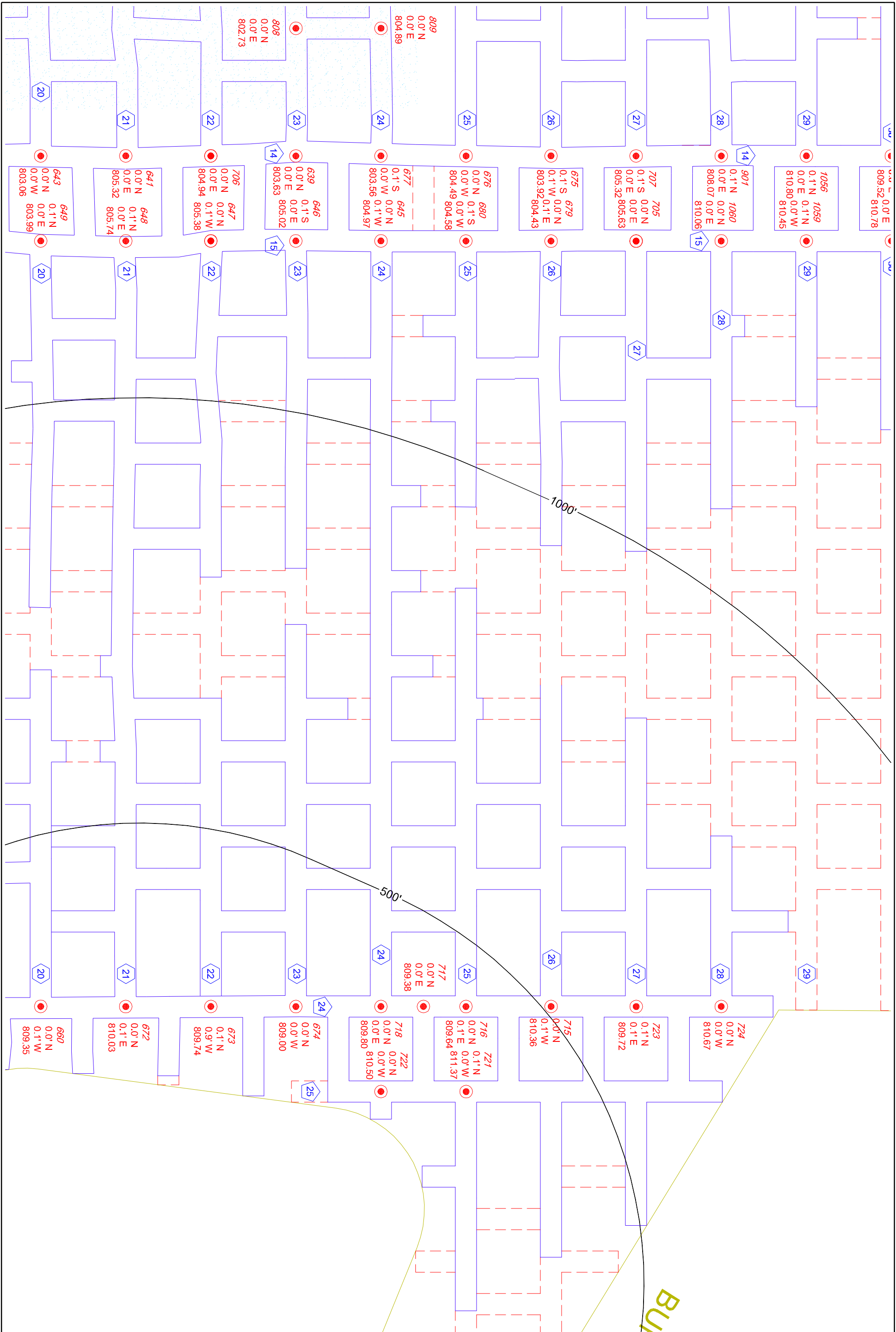
J-12E  
SHEET NO.

| PROJECT NO. | CAD FILE    | SURVEYED BY | DRAWN BY   | APPROVED BY | NO. | DATE      | REVISIONS      | BY  |
|-------------|-------------|-------------|------------|-------------|-----|-----------|----------------|-----|
| 18-0609     | 18-0609.dwg | TMH         | TMH        |             |     |           |                |     |
| DATE        | CRD FILE    | SURVEY DATE | CHECKED BY | SCALE       |     |           |                |     |
| 10/24/2018  | 18-0609.crd | 10/3/2018   | TMH        | 1"=100'     |     |           |                |     |
|             |             |             |            |             | 1   | 11/9/2018 | CONTROL POINTS | TMH |

WISCONSIN INDUSTRIAL SAND COMPANY, LLC  
 A DIVISION OF COVIA HOLDINGS CORP.  
 MAIDEN ROCK, WISCONSIN  
 CONTROL POINT DETAIL MAP



Healy Land Surveying  
 P.O. Box 221  
 Niagara, WI 54151  
 Phone: 715-548-0566  
 info@healysurveying.com



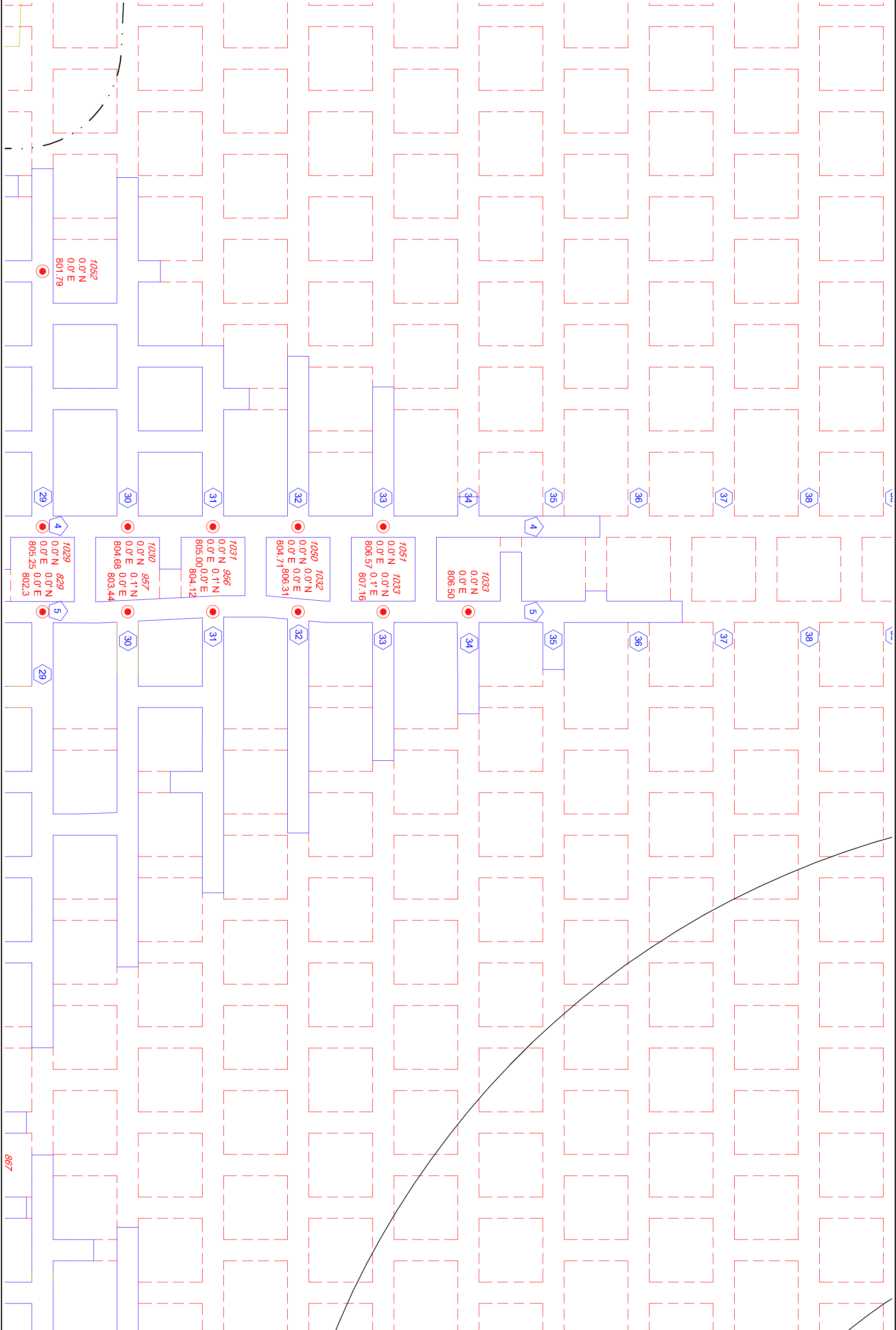
J-12F  
SHEET NO.

|                        |                         |                          |                   |                  |     |           |                |     |
|------------------------|-------------------------|--------------------------|-------------------|------------------|-----|-----------|----------------|-----|
| PROJECT NO.<br>18-0609 | CAD FILE<br>18-0609.dwg | SURVEYED BY<br>TMH       | DRAWN BY<br>TMH   | APPROVED BY      | NO. | DATE      | REVISIONS      | BY  |
| DATE<br>10/24/2018     | CRD FILE<br>18-0609.crd | SURVEY DATE<br>10/3/2018 | CHECKED BY<br>TMH | SCALE<br>1"=100' | 1   | 11/9/2018 | CONTROL POINTS | TMH |

WISCONSIN INDUSTRIAL SAND COMPANY, LLC  
A DIVISION OF COVIA HOLDINGS CORP.  
MAIDEN ROCK, WISCONSIN  
CONTROL POINT DETAIL MAP

**HEALY**  
LAND SURVEYING

Healy Land Surveying  
P.O. Box 221  
Niagara, WI 54151  
Phone: 715-548-0566  
info@healysurveying.com



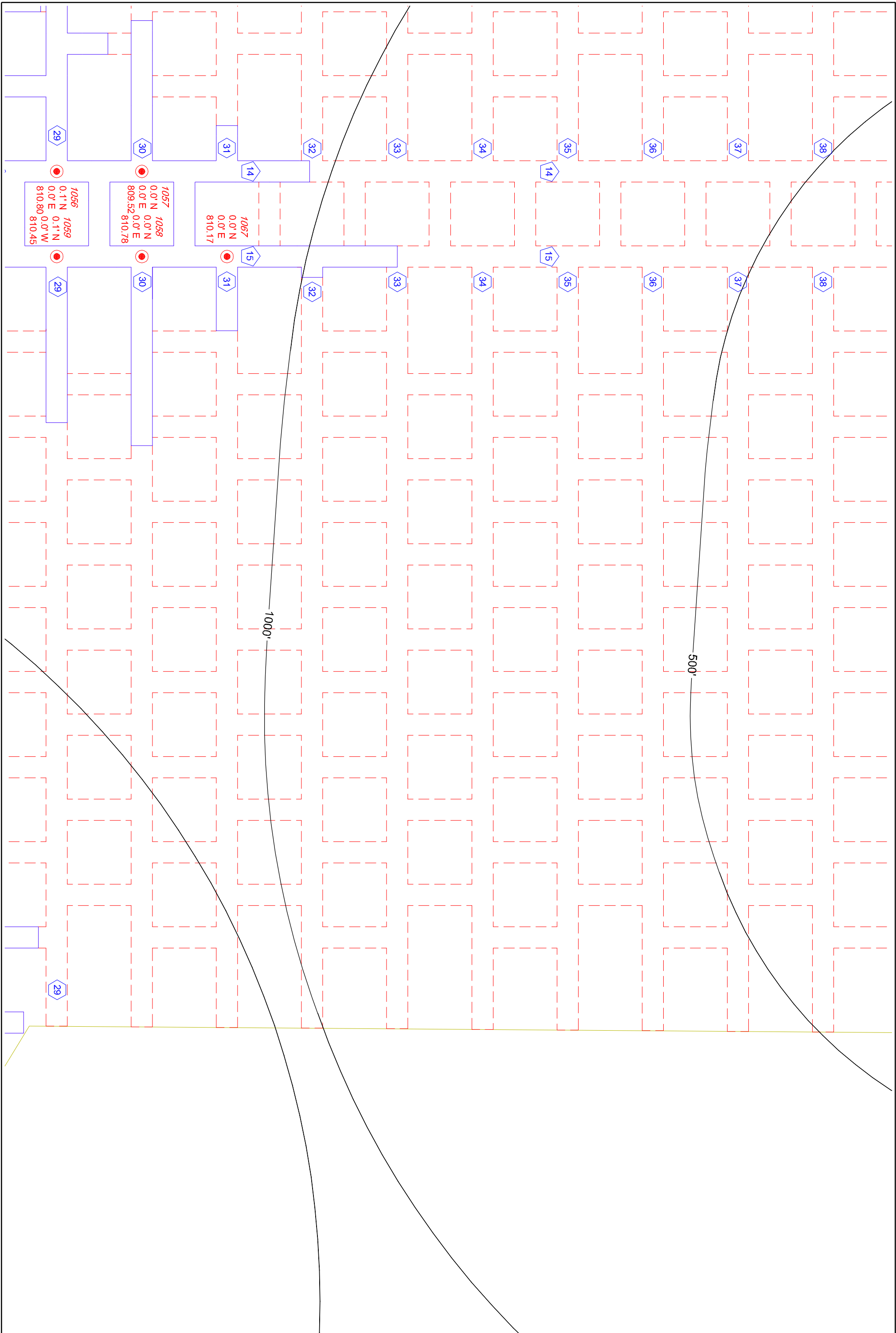
J-13E  
SHEET NO.

| PROJECT NO. | CAD FILE    | SURVEYED BY | DRAWN BY   | APPROVED BY | NO. | DATE      | REVISIONS      | BY  |
|-------------|-------------|-------------|------------|-------------|-----|-----------|----------------|-----|
| 18-0609     | 18-0609.dwg | TMH         | TMH        |             |     |           |                |     |
| DATE        | CRD FILE    | SURVEY DATE | CHECKED BY | SCALE       |     |           |                |     |
| 10/24/2018  | 18-0609.crd | 10/3/2018   | TMH        | 1"=100'     |     |           |                |     |
|             |             |             |            |             | 1   | 11/9/2018 | CONTROL POINTS | TMH |

WISCONSIN INDUSTRIAL SAND COMPANY, LLC  
 A DIVISION OF COVIA HOLDINGS CORP.  
 MAIDEN ROCK, WISCONSIN  
 CONTROL POINT DETAIL MAP



Healy Land Surveying  
 P.O. Box 221  
 Niagara, WI 54151  
 Phone: 715-548-0566  
 info@healysurveying.com



|                    |                        |                         |                          |                   |                  |     |           |                |     |
|--------------------|------------------------|-------------------------|--------------------------|-------------------|------------------|-----|-----------|----------------|-----|
| J-13F<br>SHEET NO. | PROJECT NO.<br>18-0609 | CAD FILE<br>18-0609.dwg | SURVEYED BY<br>TMH       | DRAWN BY<br>TMH   | APPROVED BY      | NO. | DATE      | REVISIONS      | BY  |
|                    | DATE<br>10/24/2018     | CRD FILE<br>18-0609.crd | SURVEY DATE<br>10/3/2018 | CHECKED BY<br>TMH | SCALE<br>1"=100' | 1   | 11/9/2018 | CONTROL POINTS | TMH |

WISCONSIN INDUSTRIAL SAND COMPANY, LLC  
 A DIVISION OF COVIA HOLDINGS CORP.  
 MAIDEN ROCK, WISCONSIN  
 CONTROL POINT DETAIL MAP



Healy Land Surveying  
 P.O. Box 221  
 Niagara, WI 54151  
 Phone: 715-548-0566  
 info@healysurveying.com